

Since 1950



POPULAR GROUP

The
Kitchen Essentials
5th Edition



Introduction

Founded in 1950, Popular Group is the maiden company to manufacture Aluminum house hold utensils in Pakistan Today, Popular has become one of the leading manufacturers of house hold and commercial utensils.

Our established ability to successfully pioneer the development of house hold and commercial utensils has enabled us to grow and prosper since the establishment.

At Popular, we offer more than 200 products of Aluminum Cookware, Pressure Cookers, Nonstick-ing Pots & Pans, Stainless Steel Flat Ware house holds and commercial utensils, Our products are being distributed in Europe, North America, Middle East, For East South and African Subcontinental.

Popular is the first kitchen ware industry in Pakistan to be ISO 9002 CERTIFIED, Popular Group is comprised of many establishment i.e. Phoenix Metal Ware Industries, Popular International, Best Group of Industries and Popular Industries. The manufacturing facility is laid over an area of 180,000 sq. feet with more then 500 professionally trained staff. They are among the most experienced, knowledgeable, and expertly trained technical and engineering professionals in the industry.

For over 50 years, we've built our reputation on innovation, and we work hard to encourage it at every level of our company. That's why we give people the ingredients they need to do their best work the respect, the encouragement, the time the resources and the recognition.

The product range includes all the utensils for domestic use, hotels, restaurants, army, hospitals & chain stores, We also provide private label merchandise and packing. Moreover, exclusive products are developed and manufactured as per customer designs and specifications.

Our future lies in offering unparalleled products and services to a worldwide market. We employ the latest technologies while providing friendly customer service. And, of course, we continue to design, engineer, and manufacture the high quality, low cast house hold & commercial utensils that have made us the leader in the industry.

International Survey Report

Light, strong and economical, easy to process and corrosion-resistant. These exceptional properties have made aluminum the material of choice for a wide range of applications.



Good Heat Conductor

Aluminum is about three times as thermal - conductive as steel. It is used for cooking utensils, air conditioners, industrial heat exchangers and automobile engine parts and for use in energy-saving equipment.



Non - toxic

Aluminum itself is non-toxic and odorless. Its surface is smooth, washable, and hygienic because no germs can grow on it. Therefore, it is widely used in beverage cans food packaging, cooking utensils and in the fishery and dairy industries.

World Safest Triple Valve Aluminum Pressure Cookers



Model # 1388
European Pressure Cooker

- Aluminum Strong Body
- 3 Safety Valves
- Bakelite Handle
- Heavy Duty Rubber Gas Kit
- Steamer Rack

Art. No.	Capacity Ltr. / Qt.	Dia. (inch)	Depth (inch)
1388-3	3 / 3.6	7.5"	4"
1389-5	5 / 6	9"	5.3"
1390-7	7 / 8.4	9"	5.3"
1391-9	9 / 10.8	10"	7"
1392-11	11 / 13.2	10"	8.3"
1393-13	13 / 15.6	10"	8.7"
1394-18	18 / 21.6	12"	9"
1395-20	20 / 24	12"	9"



Model # 1396
Aluminum Casting Handle
Pressure Cooker (Life Time Use)

- Aluminum Strong Body
- 3 Safety Valves
- Metal Side Handles
- Aluminum Top Grip
- Heavy Duty Rubber Gas Kit
- Steamer Rack

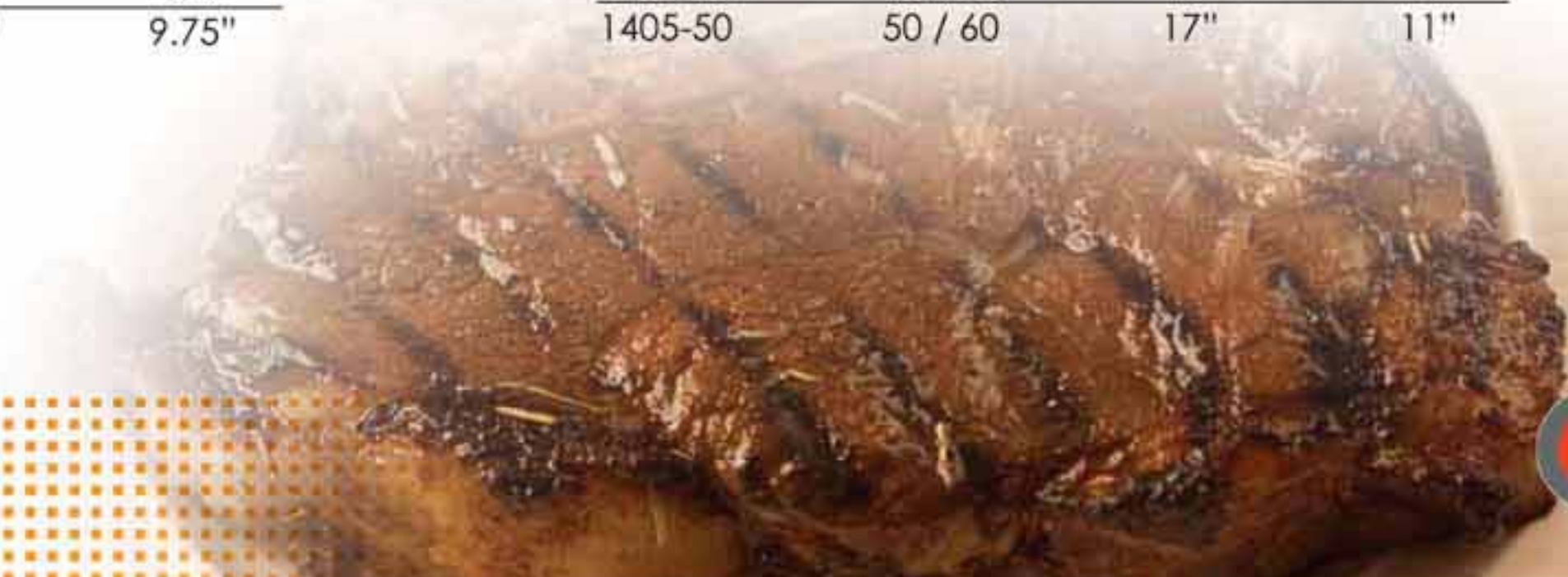
Art. No.	Capacity Ltr. / Qt.	Dia. (inch)	Depth (inch)
1396-5	5 / 6	9"	6"
1397-7	7 / 8.4	9"	7"
1398-9	9 / 10.8	10"	7.5"
1399-11	11 / 13.2	10"	8.5"
1400-13	13 / 15.6	10"	9.75"



Model # 1401
Commercial Pressure Cooker
(Heavy Duty)

- Aluminum Strong Body
- 3 Safety Valves
- Strong Riveted Side Handles
- Heavy Duty Rubber Gas Kit

Art. No.	Capacity Ltr. / Qt.	Dia. (inch)	Depth (inch)
1401-18	18 / 21.6	12"	8"
1402-20	20 / 24	12"	9"
1403-30	30 / 36	17"	8"
1404-40	40 / 48	17"	9"
1405-50	50 / 60	17"	11"



Low Cost High Quality Cookware

Casserole / Cooking Pots

- 3 Types Each Available in 10 Sizes • Pot Thickness 1.5mm, Lid Thickness 1.2mm • Satin Finish, inside and outside • Available in 3 Types of Handles attached with rivets • Individual Packed



Model # 1406

A - Aluminum Pot, With Lid
(Tube Handles)

Model # 1416

A - Aluminum Pot, With Lid
(Wire Handles)

Model # 1426

C - Aluminum Pot, With Lid
(Bakelite Handles)

Art. No. for A	Art. No. for B	Art. No. for C	Dia. (cm)	Depth (cm)	Total Wgt (kg)
1406-16	1416-16	1426-16	16	8.0	0.370
1407-18	1417-18	1427-18	18	9.0	0.400
1408-20	1418-20	1428-20	20	10.0	0.440
1409-22	1419-22	1429-22	22	11.0	0.475
1410-24	1420-24	1430-24	24	12.0	0.590
1411-26	1421-26	1431-26	26	13.0	0.700
1412-28	1422-28	1432-28	28	14.0	0.890
1413-30	1423-30	1433-30	30	15.0	1.010
1414-32	1424-32	1434-32	32	16.0	1.220
1415-34	1425-34	1435-34	34	17.0	1.460



Available Packing



Packing Details

- Each Piece in Shrink Pack
- Sizes 16cm sizes upto 24cm sizes in 8 pcs. Pack
- Sizes 26cm sizes upto 34cm sizes in 4 pcs. Pack
- 20ft. Assembled Container Quantity 3970 pcs.
- 40ft. (HC) Assembled Container Quantity 6136 pcs.

Low Cost High Quality Cookware



Model # 1433
Cooking Pots / Casserole
(Low Height)

- Available in 10 Sizes
- Pot Thickness 1.5mm, Lid Thickness 1.2mm
- Satin Finish, inside and outside
- Metal Wire Handle

Art. No.	Dia. (cm)	Depth (cm)	Total Wgt (kg)
1433-16	16	8.0	0.300
1434-18	18	9.0	0.400
1435-20	20	10.0	0.500
1436-22	22	11.0	0.600
1437-24	24	12.0	0.700
1438-26	26	13.0	0.800
1439-28	28	14.0	1.000
1440-30	30	15.0	1.210
1441-32	32	16.0	1.460
1442-34	34	17.0	1.700



Model # 1443
Tapered Sauce Pan

- Tapered Design For Convenient Storage
- Thickness 1.5mm
- Metal Chrome Plated Handle

Art. No.	Dia. (cm)	Depth (cm)	Weight (kg)
1443-16	16	10.0	0.200
1444-18	18	10.5	0.250



Model # 1445
Fry Pan With Double Tube
Handles

- Ideal Shape For Turning, Flipping and Cleaning
- Thickness 1.63mm
- Riveted Side Tube Handles

Art. No.	Dia. (cm)	Depth (cm)	Weight (kg)
1445-16	16	4.0	0.195
1446-18	18	4.5	0.210



Low Cost High Quality Cookware



Model # 1447 Aluminum Fry Pans

- Satin Finish
- Thickness 1.5mm
- Available in 3 Types of Handles



A. Metal Chrome Plated Handle



B. Metal Color Coated Handle



C. Bakelite Handle

Art. No.	Dia. (cm)	Depth (cm)	Weight (kg)
1447-16	16	2.5	0.175
1448-18	18	3.0	0.250
1449-20	20	3.5	0.300

Model # 1450 Aluminum Non-Stick Fry Pans

- Outside Color or Satin Finish
- Thickness 1.5mm
- Available in 3 Types of Handles



A. Metal Chrome Plated Handle



B. Metal Color Coated Handle



C. Bakelite Handle

Art. No.	Dia. (cm)	Depth (cm)	Weight (kg)
1450-16	16	2.5	0.175
1451-18	18	3.0	0.250
1452-20	20	3.5	0.300



Low Cost High Quality Cookware



Model # 1453 Aluminum Deep Fry Pans

- Available in 2 Types of Handles
- Thickness 1.5mm - 2mm
- Satin Finish, inside and outside



A. Metal Chrome Plated Handle



B. Metal Color Coated Handle

Art. No.	Dia. (cm)	Depth (cm)	Weight (kg)
1453-24	24	7.0	0.500
1454-28	28	7.5	0.750
1455-32	32	8.0	1.000

Model # 1456 Aluminum Deep Fry Pans Double Handles

- Metal Wire Double Handles
- Thickness 1.5mm - 2mm
- Satin Finish, inside and outside

Art. No.	Dia. (cm)	Depth (cm)	Weight (kg)
1456-24	24	7.0	0.500
1457-28	28	7.5	0.750
1458-32	32	8.0	1.000



High Quality Bake Ware



Model # 1459 / 1472
Cake Pans / Roaster Pans
Aluminum / Non-Stick
(Straight Walls)

- Available in Plain and Non-Stick
- Thickness 1.5mm

Alumn.	Non Stick	Dia. (cm)	Depth (cm)	Weight (kg)
1459-18	1472-18	18.00	6.00	0.150
1460-20	1473-20	20.00	6.00	0.180
1461-22	1474-22	22.00	6.00	0.195
1462-24	1475-24	24.00	6.50	0.210
1463-26	1476-26	26.00	6.50	0.260
1464-28	1477-28	28.00	6.50	0.300
1465-30	1478-30	30.00	7.00	0.330
1466-32	1479-32	32.00	7.00	0.360
1467-34	1480-34	34.00	7.00	0.400
1468-36	1481-36	36.00	7.50	0.450
1469-38	1482-38	38.00	7.50	0.490
1470-40	1483-40	40.00	7.50	0.600
1471-42	1484-42	42.00	7.50	0.750



Model # 1485 / 1494
Cake Pans / Pizza Pans
Aluminum / Non-Stick
(Straight Walls, Low Height)

- Available in 3 Types of Handles
- Thickness 1.5mm
- Satin Finish outside

Alumn.	Non Stick	Dia. (cm)	Depth (cm)	Weight (kg)
1485-26	1494-26	26	2.75	0.200
1486-28	1495-28	28	3.25	0.250
1487-30	1496-30	30	3.25	0.300
1488-32	1497-32	32	3.25	0.330
1489-34	1498-34	34	3.25	0.360
1490-36	1499-36	36	3.25	0.400
1491-38	1500-38	38	3.25	0.450
1492-40	1501-40	40	3.25	0.500
1493-42	1502-42	42	3.25	0.600



High Quality Bake Ware



Model # 1503 / 1516
Conical Shape Cake Pans / Roaster Pans
Aluminum / Non-Stick

- Available in Plain and Non-Stick
- Thickness 1.5mm

Alumn.	Non Stick	Dia. (cm)	Depth (cm)	Weight (kg)
1503-18	1516-18	18.00	6.00	0.150
1504-20	1517-20	20.00	6.00	0.180
1505-22	1518-22	22.00	6.00	0.195
1506-24	1519-24	24.00	6.50	0.210
1507-26	1520-26	26.00	6.50	0.260
1508-28	1521-28	28.00	6.50	0.300
1509-30	1522-30	30.00	7.00	0.330
1510-32	1523-32	32.00	7.00	0.360
1511-34	1524-34	34.00	7.00	0.400
1512-36	1525-36	36.00	7.50	0.450
1513-38	1526-38	38.00	7.50	0.490
1514-40	1527-40	40.00	7.50	0.600
1515-42	1528-42	42.00	7.50	0.750



Model # 1529 / 1538
Conical Shape Cake Pans / Pizza Pans
Aluminum / Non-Stick
(Low Height)

- Available in 3 Types of Handles
- Thickness 1.5mm
- Satin Finish outside

Alumn.	Non Stick	Dia. (cm)	Depth (cm)	Weight (kg)
1529-18	1538-18	26	2.75	0.200
1530-20	1539-20	28	3.25	0.250
1531-22	1540-22	30	3.25	0.300
1532-24	1541-24	32	3.25	0.330
1533-26	1542-26	34	3.25	0.360
1534-28	1543-28	36	3.25	0.400
1535-30	1544-30	38	3.25	0.450
1536-32	1545-32	40	3.25	0.500
1537-34	1546-34	42	3.25	0.600



High Quality Bake Ware



Model # 1547 / 1550
Cake Foams
Aluminum / Non-Stick

- Available in Plain and Non-Stick
- Thickness 1.8mm

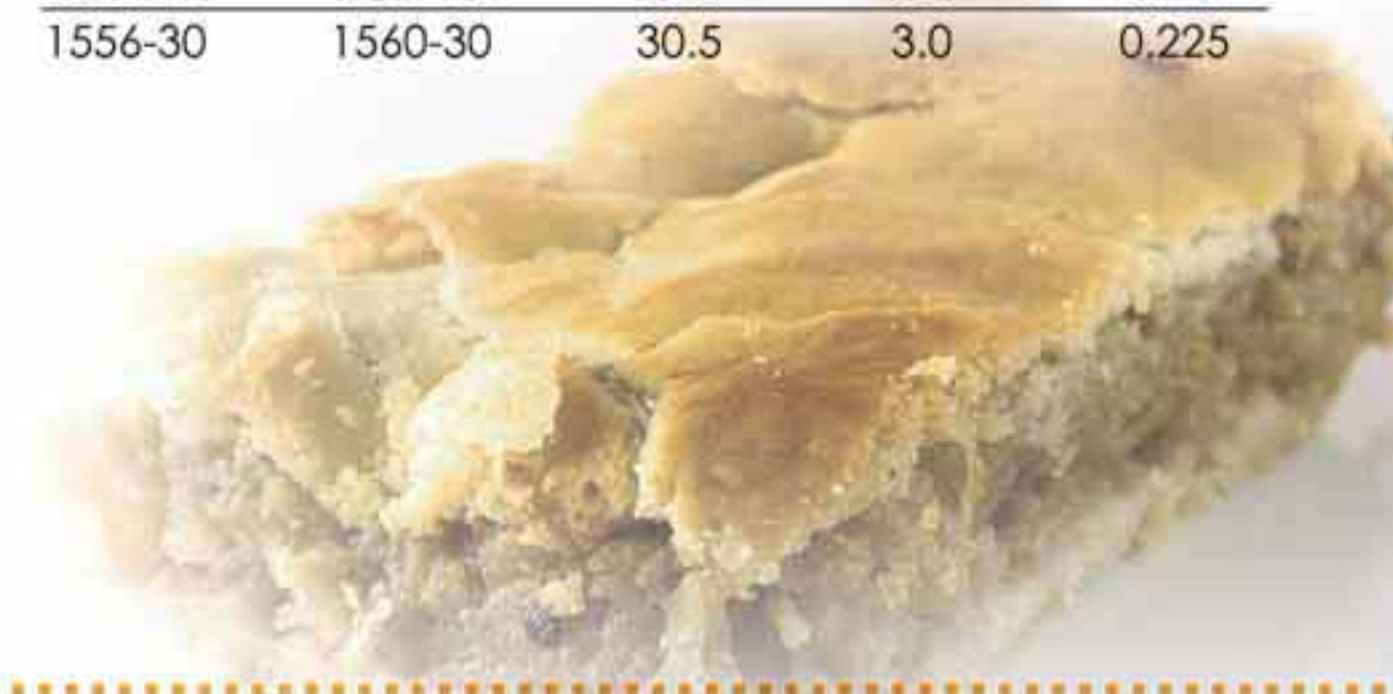
Alumn.	Non Stick	Dia. (cm)	Depth (cm)	Weight (kg)
1547-24	1550-24	24	9	0.250
1548-26	1551-26	26	9.5	0.350
1549-28	1552-28	28	10	0.450



Model # 1553 / 1557
Pie Pans
Aluminum / Non-Stick

- Available in Plain and Non-Stick
- Thickness 1.5mm

Alumn.	Non Stick	Dia. (cm)	Depth (cm)	Weight (kg)
1553-23	1557-23	23.0	3.0	0.190
1554-25	1558-25	25.4	3.0	0.200
1555-28	1559-28	28.0	3.0	0.215
1556-30	1560-30	30.5	3.0	0.225



Baking & Roast Pans



Model # 1561 / 1564
Roast Pans / Oblong Pans
Aluminum / Non-Stick

- Available in Plain and Non-Stick
- Thickness 1.5mm

Alumn.	Non Stick	Length (cm)	Width (cm)	Height (cm)	Weight (kg)
1561-18	1564-18	30	24.5	5.6	0.345
1562-20	1565-20	35	27.5	6.6	0.395
1563-22	1566-22	40	29.0	7.5	0.485



Baking & Roast Pans



Model # 1567
Aluminum Bake Pans /
Roast Pans

- Satin Finish
- Thickness 1.8mm
- Riveted Wire Handles

Art No.	Length (cm)	Width (cm)	Height (cm)	Weight (kg)
1567-30	30	43	5.7	0.650



Model # 1568
Non-Stick Round Bake Pans /
Roast Pans

- Thickness 1.5mm
- Riveted Wire Handles

Non Stick	Dia. (cm)	Depth (cm)	Weight (kg)
1568-18	18.00	6.00	0.200
1569-20	20.00	6.00	0.230
1570-22	22.00	6.00	0.245
1571-24	24.00	6.50	0.260
1572-26	26.00	6.50	0.310
1573-28	28.00	6.50	0.350
1574-30	30.00	7.00	0.380
1575-32	32.00	7.00	0.410
1576-34	34.00	7.00	0.450
1577-36	36.00	7.50	0.500
1578-38	38.00	7.50	0.540
1579-40	40.00	7.50	0.650
1580-42	42.00	7.50	0.800



Exclusive Range

Aluminum Sheeted Caldero Pots



New Arrival

Model # 1581
Aluminum Caldero Pots

- Satin Finish
- Thickness 2mm & 1.5mm

Art. No.	Dia. (cm)	Depth (cm)	Weight (kg) 2mm	Weight (kg) 1.5mm
1581-3	19	7	0.610	0.550
1582-4	22	10	0.818	0.700
1583-5	24	10.5	0.850	0.750
1584-7	25	11	0.900	0.786
1585-9	30	11.5	1.300	1.150
1586-14	37	13	1.800	1.720
1587-20	44	14	2.750	2.390
1588-24	48	15	3.600	3.080

Model # 1589
Aluminum Caldero Pots
(Die-Casted Finish)

- Mirror Polish Inside & Outside
- Thickness 2mm & 1.5mm

Art. No.	Dia. (cm)	Depth (cm)	Weight (kg) 2mm	Weight (kg) 1.5mm
1589-3	19	7	0.610	0.550
1590-4	22	10	0.818	0.700
1591-5	24	10.5	0.850	0.750
1592-7	25	11	0.900	0.786
1593-9	30	11.5	1.300	1.150
1594-14	37	13	1.800	1.720
1595-20	44	14	2.750	2.390
1596-24	48	15	3.600	3.080

Model # 1597
3pcs. Baby Caldero Pots
(Aluminum)

- Satin Finish Inside and Outside
- Thickness 2mm

Art. No. 1597
8 x 5cm
10 x 5.46cm
12 x 6.35cm
Set Weight 1.500kg



Exclusive Range

Aluminum Sheeted Caldero Pots



Model # 1598
Aluminum Caldero Pots
(Mirror Finish)

- Thickness 2mm & 1.5mm



Model # 1606 / 1614
Aluminum Caldero Pots
(Color Coated)

- Available in Matching & Glass Lid
- Thickness 1.5mm



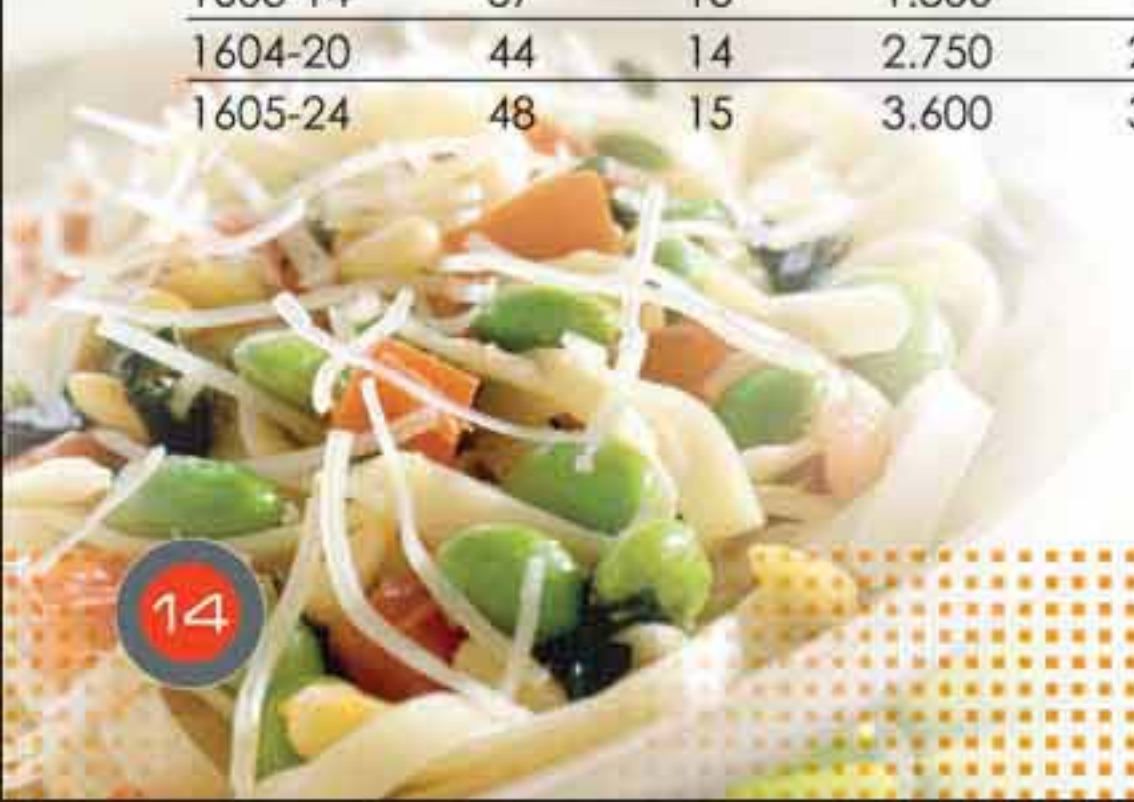
1622
Aluminum Caldero Pots
(Non-Stick)

- Satin Finish Outside and Non-Stick Inside
- Thickness 1.5mm

Art. No.	Dia. (cm)	Depth (cm)	Weight (kg) 2mm	Weight (kg) 1.5mm
1598-3	19	7	0.610	0.550
1599-4	22	10	0.818	0.700
1600-5	24	10.5	0.850	0.750
1601-7	25	11	0.900	0.786
1602-9	30	11.5	1.300	1.150
1603-14	37	13	1.800	1.720
1604-20	44	14	2.750	2.390
1605-24	48	15	3.600	3.080

Art. No. Matching Lid	Art. No. Glass Lid	Dia. (cm)	Depth (cm)	Weight (kg) With Matching Lid	Weight (kg) Without Lid
1606-3	1614-3	19	7	0.550	0.335
1607-4	1615-4	22	10	0.700	0.507
1608-5	1616-5	24	10.5	0.750	0.539
1609-7	1617-7	25	11	0.786	0.629
1610-9	1618-9	30	11.5	1.150	0.733
1611-14	1619-14	37	13	1.720	0.810
1612-20	1620-20	44	14	2.390	0.895
1613-24	1621-24	48	15	3.080	1.200

Art. No.	Dia. (cm)	Depth (cm)	Weight (kg)
1622-3	19	7	0.550
1623-4	22	10	0.700
1624-5	24	10.5	0.750
1625-7	25	11	0.786
1626-9	30	11.5	1.150
1627-14	37	13	1.720
1628-20	44	14	2.390
1629-24	48	15	3.080



Top Range Aluminum Cookware

Casserole / Cooking Pots

- With Top Rim
- Satin Finish, inside and outside
- Available in 3 Types of Handles



A - Wire Metal Handle, Square Shape



B - Wire Metal Handle, Round Shape



C - Dye Casted Handle



Model # 1630
Cooking Pots / Casserole
(Low Height)

- Pot Thickness 3.5mm, Lid Thickness 1.5mm
- Satin Finish, inside and outside

Art. No.	Dia. (cm)	Depth (cm)	Total Wgt (kg)
1630-24	24	9.5	0.885
1631-26	26	10.5	1.080
1632-28	28	11.0	1.350
1633-30	30	11.5	1.520
1634-32	32	12.0	1.820
1635-34	34	13.0	2.110
1636-36	36	14.0	2.350
1637-38	38	15.0	2.950
1638-40	40	16.0	3.300
1639-45	45	18.0	4.700
1640-50	50	21.0	5.800



Model # 1641
Cooking Pots / Casserole
(Regular Height)

- Pot Thickness 3.5mm, Lid Thickness 1.5mm
- Satin Finish, inside and outside

Art. No.	Dia. (cm)	Depth (cm)	Total Wgt (kg)
1642-18	18	10.0	0.900
1643-20	20	13.0	1.015
1644-22	22	14.0	1.260
1645-24	24	14.5	1.500
1646-26	26	16.5	1.730
1647-28	28	17.5	2.250
1648-30	30	18.5	2.570
1649-32	32	19.5	3.070
1650-34	34	22.5	3.660
1651-36	36	23.5	4.350



Model # 1652
Cooking Pots / Casserole
(Deep)

- Pot Thickness 3.5mm, Lid Thickness 1.5mm
- Satin Finish, inside and outside

Art. No.	Dia. (cm)	Depth (cm)	Total Wgt (kg)
1652-26	26	26	1.580
1653-28	28	28	1.850
1654-30	30	30	2.2250
1655-32	32	32	2.520
1656-34	34	34	3.410
1657-36	36	36	3.850
1658-38	38	38	4.650
1659-40	40	40	5.350



Top Range Aluminum Cookware

Casserole / Cooking Pots



- Without Top Rim
- Satin Finish, inside and outside
- Available in 3 Types of Handles



A - Wire Metal Handle, Square Shape



B - Wire Metal Handle, Round Shape



C - Dye Casted Handle



Model # 1660
Cooking Pots / Casserole
(Low Height)

- Pot Thickness 2mm, Lid Thickness 1.5mm
- Satin Finish, inside and outside

Art. No.	Dia. (cm)	Depth (cm)	Total Wgt (kg)
1660-24	24	9.5	0.750
1661-26	26	10.5	0.850
1662-28	28	11.0	0.980
1663-30	30	11.5	1.300
1664-32	32	12.0	1.470
1665-34	34	13.0	1.670
1666-36	36	14.0	1.990
1667-38	38	15.0	2.300
1668-40	40	16.0	2.700
1669-45	45	18.0	3.900
1670-50	50	21.0	4.900



Model # 1671
Cooking Pots / Casserole
(Regular Height)

- Pot Thickness 2mm, Lid Thickness 1.5mm
- Satin Finish, inside and outside

Art. No.	Dia. (cm)	Depth (cm)	Total Wgt (kg)
1671-18	18	10.0	0.850
1672-20	20	13.0	0.970
1673-22	22	14.0	1.150
1674-24	24	14.5	1.290
1675-26	26	16.5	1.410
1676-28	28	17.5	1.550
1677-30	30	18.5	1.850
1678-32	32	19.5	2.200
1679-34	34	22.5	2.500
1680-36	36	23.5	3.900



Model # 1681
Cooking Pots Casserole
(Deep)

- Pot Thickness 2mm, Lid Thickness 1.5mm
- Satin Finish, inside and outside

Art. No.	Dia. (cm)	Depth (cm)	Total Wgt (kg)
1681-26	26	26	1.500
1682-28	28	28	1.750
1683-30	30	30	2.100
1684-32	32	32	2.400
1685-34	34	34	3.230
1686-36	36	36	3.600
1687-38	38	38	4.400
1688-40	40	40	5.100



Top Range Aluminum Cookware



New Development



Model # 1689 Sauce Pan, With Long Handle

- Pot Thickness 2mm, Lid Thickness 1.5mm
- Long Handle and Side Tube Handle
- Satin Finish, inside and outside

Art. No.	Dia. (cm)	Depth (cm)	Total Wgt (kg)
1689-20	20	10.50	0.895
1690-22	22	10.80	0.915



Extra Heavy Base



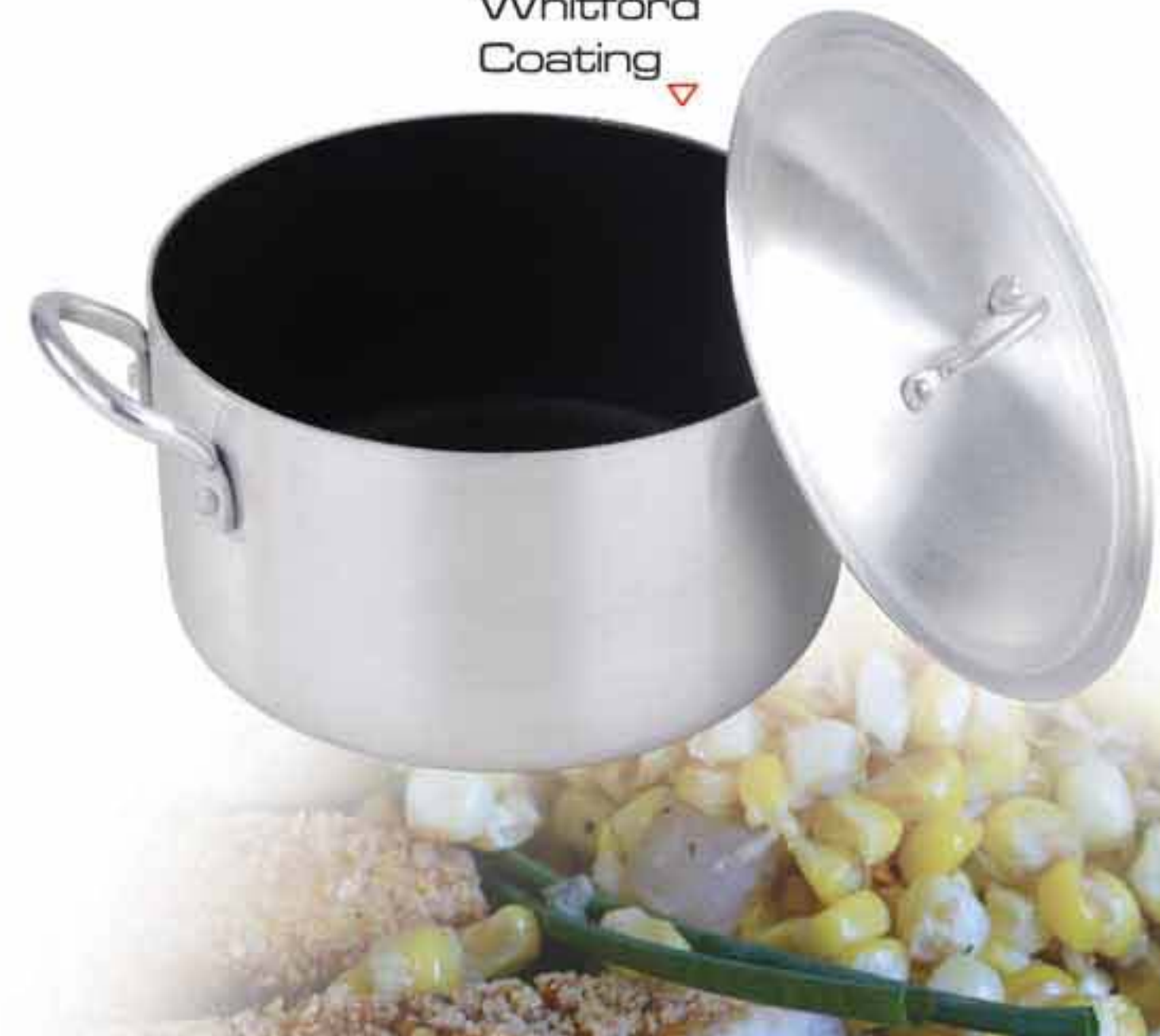
Extra Heavy Stamped Base

Model # 1691 / 1701 Ground Base Cooking Pots / Casserole (Aluminum / Non-Stick)

- With Bottom Groove Seat
- Satin Finish
- Also Available in Non-Stick
- Thickness 3.2mm

Art. No.	Art. No. Non-Stick	Dia. (cm)	Depth (cm)	Total Wgt (kg)
1691-18	1701-18	18	10	0.900
1692-20	1702-20	20	13	1.015
1693-22	1703-22	22	14	1.260
1694-24	1704-24	24	14.5	1.500
1695-26	1705-26	26	16.5	1.730
1696-28	1706-28	28	17.5	2.250
1697-30	1707-30	30	18.5	2.570
1698-32	1708-32	32	19.5	3.070
1699-34	1709-34	34	22.5	3.660
1700-36	1710-36	36	23.5	4.350

Whitford
Coating ▾



Top Range Aluminum Cookware



Model # 1711 Aluminum Easy Cook Fry Pans

- Satin Finish
- Thickness 2.5mm
- Available in 2 Types of Handles



A. Stainless Steel Tube Handle



B. Metal Color Coated Handle

Art No.	Dia. (cm)	Depth (cm)	Wgt.(kg)	
			2.5 mm	3.2 mm
1711-18	18	3.00	0.460	0.548
1712-20	20	3.50	0.560	0.605
1713-22	22	3.75	0.695	0.795
1714-24	24	4.00	0.795	0.895
1715-26	26	4.20	0.895	0.900
1716-28	28	4.50	1.050	1.100
1717-30	30	4.80	1.140	1.160
1718-32	32	5.00	1.250	1.520
1719-34	34	5.20	1.455	1.755
1720-36	36	5.50	1.610	1.875



Top Range Aluminum Cookware



Model # 1721 / 1726
Aluminum Professional Fry Pans

- Satin Finish
- Thickness 2.5mm
- Available in 2 Types of Handles



A. Metal Handle



B. Metal Handle,
 With Silicon Grip

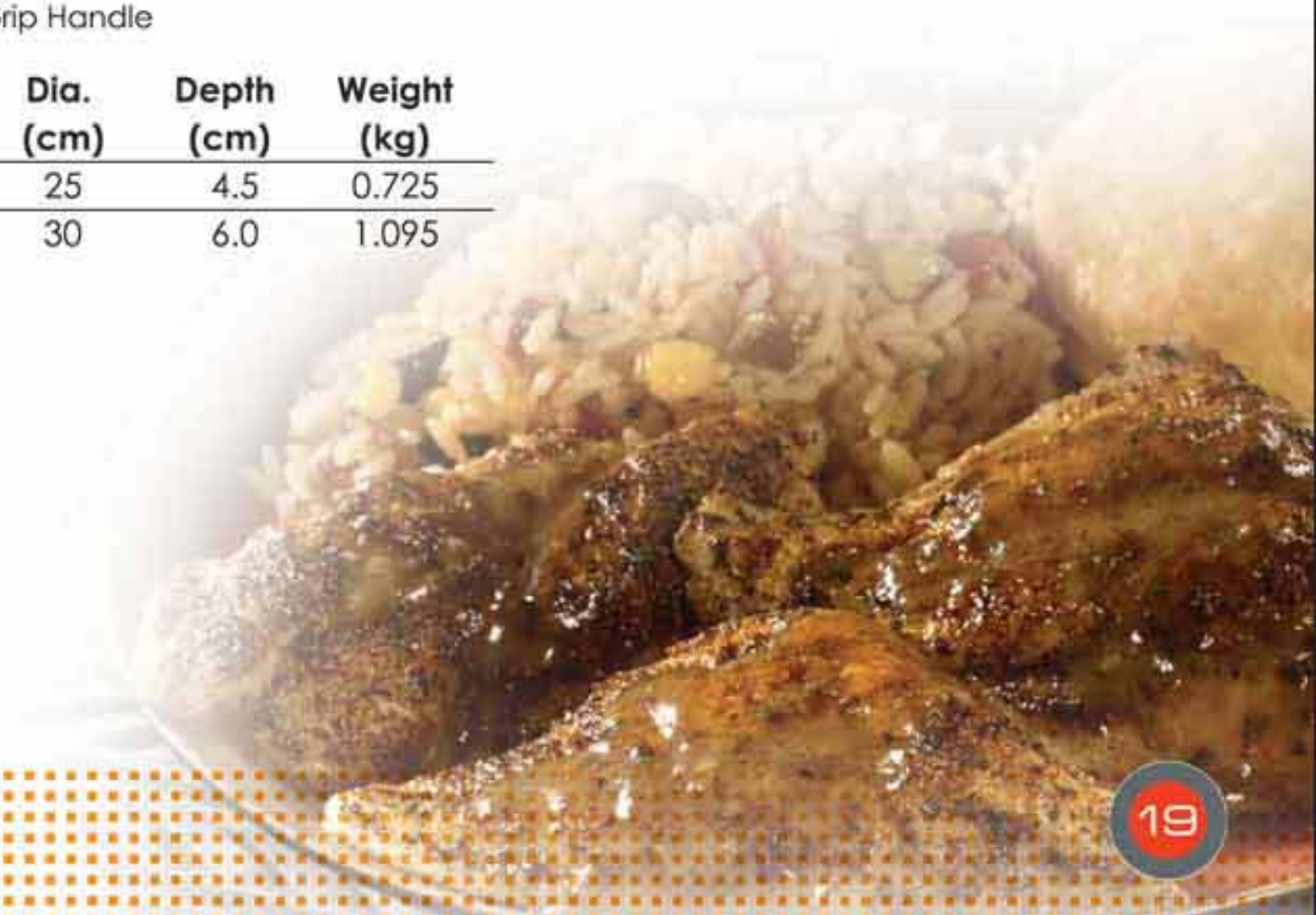
Art No.	Silicon Grip	Dia. (cm)	Depth (cm)	Weight (kg)
1721-18	1726-18	18	4.50	0.575
1722-20	1727-20	20	4.75	0.600
1723-25	1728-25	25	5.00	0.675
1724-30	1729-30	30	5.50	1.670
1725-35	1730-35	35	7.00	2.200



1731
Aluminum Catering Expert Fry Pans (V-Shape)

- Thickness 2.5mm
- Satin Finish, inside and outside
- Silicon Grip Handle

Art. No.	Dia. (cm)	Depth (cm)	Weight (kg)
1731-25	25	4.5	0.725
1732-30	30	6.0	1.095



Top Range Aluminum Cookware



Model # 1733 5 Pcs. Aluminum Cookware Set

- Available in 2 Types of Handles
- Available in 2 Types of Lids
- Thickness 2.5mm
- Satin Finish, inside and outside

Set Weight:
With Lid 6.116 kg
W/O Lid 4.656 kg



A - Wire Metal Handle,
Round Shape



C - Lid Type 1



B - Wire Handle,
Square Shape



D - Lid Type 2

Art. No.	Capacity Ltr. / Qt.	Dia. (cm)	Depth (cm)	With Lid (kg)	W/O Lid (kg)
1733-18	2.2 / 2.64	18.5	9.2	0.830	0.654
1734-21	3.4 / 4.08	21	10.5	0.966	0.750
1735-23	4.4 / 5.28	23.7	11.5	1.298	0.970
1736-26	6.4 / 7.68	26.1	13	1.404	1.082
1737-29	8.3 / 9.96	29.1	14	1.618	1.200

Top Range Aluminum Cookware



Model # 1738 4 Pcs. Aluminum Cooking Pot / Fish Pot Set

- Available in 2 Types of Handles
- Available in 2 Types of Lids
- Thickness 2.5mm
- Satin Finish



A - Wire Metal Handle,
Round Shape



C - Lid Type 1



B - Wire Metal Handle,
Square Shape



D - Lid Type 2

Set Weight:
with Lid 9.902 kg
W/O Lid 7.678 kg

Art. No.	Capacity Ltr. / Qt.	Dia. (cm)	Depth (cm)	With Lid (kg)	W/O Lid (kg)
1738-32	10 / 12	32	12.5	2.156	1.672
1739-34	12 / 14.4	34.5	13	2.296	1.832
1740-36	14 / 16.8	36.5	13.5	2.580	1.970
1741-39	16 / 19.2	39	14.5	2.870	2.204



Top Range Aluminum Cookware



Model # 1741 4 Pcs. Aluminum Cooking Pot / Fish Pot Set (Low Height)

- Available in 2 Types of Handles
- Available in 2 Types of Lids
- Thickness 2.5mm
- Satin Finish



A - Wire Metal Handle,
Round Shape



C - Lid Type 1



B - Wire Metal Handle,
Square Shape



D - Lid Type 2

Set Weight:
with Lid 5.396 kg
W/O Lid 4.210 kg

Art. No.	Capacity Ltr. / Qt.	Dia. (cm)	Depth (cm)	With Lid (kg)	W/O Lid (kg)
1741-3	3 / 3.6	24.5	7.5	1.158	0.896
1742-4	4 / 4.8	26.5	8.5	1.24	0.956
1743-6	6 / 7.2	28.5	9.5	1.432	1.126
1744-7	7 / 8.4	30	10.5	1.566	1.232

Exclusive Aluminum Cookware Range



Model # 1745
6 Pcs. Aluminum
Cooking Pot Set

- Pot Thickness 1.8 - 2mm, Lid Thickness 1.5mm
- Satin Finish, inside and outside
- Weight 8.5kg - 9.5kg

Art. No.	Dia. (cm)	Depth (cm)
1745-18	18	9
1746-22	22	11
1747-24	24	12
1748-26	26	13
1749-28	28	14
1750-30	30	15



Model # 1751
5 Pcs. Aluminum
Cooking Pot Set

- Pot Thickness 1.8 - 2mm, Lid Thickness 1.5mm
- Satin Finish, inside and outside
- Weight 6.5kg - 7.5kg

Art. No.	Dia. (cm)	Depth (cm)
1751-18	18	9
1752-22	22	11
1753-24	24	12
1754-26	26	13
1755-28	28	14



Model # 1756
3 Pcs. Aluminum
Cooking Pot Set

- Pot Thickness 1.8 - 2mm, Lid Thickness 1.5mm
- Satin Finish, inside and outside
- Weight 8.5kg - 9.5kg

Art. No.	Dia. (cm)	Depth (cm)
1756-30	30	15
1757-32	32	16
1758-34	34	17



Exclusive Aluminum Cookware Range



Strong Die Casted Handle



Model # 1759 6 Pcs. Aluminum Cooking Pot Set (die casted handle)

- Strong Aluminum Body
- Thickness 2.5mm
- Strong Die Casted Handle Attached with Double Rivets
- Satin Finish
- Weight 11.0kg - 12.0kg

Art. No.	Dia. (cm)	Depth (cm)
1759-20	20	14
1760-22	22	15
1761-24	24	16
1762-26	26	17
1763-28	28	18
1764-30	30	19

Model # 1765 4 Pcs. Aluminum Catering Pot Set (die casted Aluminum handle)

- Strong Aluminum Body
- Thickness 2.5mm
- Strong Die Casted Handle Attached with Double Rivets
- Satin Finish, inside and outside
- Weight 22.0kg - 23.0kg

Art. No.	Dia. (cm)	Depth (cm)
1765-45	45	30
1766-50	50	32
1767-55	55	34
1768-60	60	36

Exclusive Aluminum Cookware Range



Model # 1769 4 Pcs. Aluminum Catering Pot Set

- Satin Finish
- Pot Thickness 2mm, Lid Thickness 1.5mm, Weight 32.0kg - 33.0kg
- Pot Thickness 2.3 - 2.5mm, Lid Thickness 1.5mm, Weight 37.0kg - 38.0kg

Art. No.	Capacity Ltr. / Qt.	Dia. (cm)	Depth (cm)	With Lid (kg)	W/O Lid (kg)
1769-43	43 / 51.6	46	26	6.162	4.784
1770-54	54 / 64.8	50	27	6.552	5.162
1771-63	63 / 75.6	53	28.5	7.194	5.770
1772-72	72 / 86.4	56	29.5	8.020	6.404



Aluminum Coffee Pots



Whitford
Coating ▶



Model # 1773
Tapered Style
Aluminum Coffee Pots

- Tapered Edge
- Thickness 1.5mm
- Available in Satin Finish and Non-Stick

Model # 1783
Round Style
Aluminum Coffee Pots

- Round Shape With Edge
- Thickness 1.5mm
- Available in Satin Finish and Non-Stick

Alumn.	Non Stick	Dia. (cm)	Depth (cm)	Weight (kg)
1773-3	1778-3	6.50	6.30	0.085
1774-4	1779-4	7.40	7.30	0.095
1775-5	1780-5	8.00	8.00	0.125
1776-6	1781-6	10.00	8.50	0.135
1777-7	1782-7	10.00	9.70	0.150

Alumn.	Non Stick	Dia. (cm)	Depth (cm)	Weight (kg)
1783-3	1788-3	6.50	6.30	0.085
1784-4	1789-4	7.40	7.30	0.095
1785-5	1790-5	8.00	8.00	0.125
1786-6	1791-6	10.00	8.50	0.135
1787-7	1792-7	10.00	9.70	0.150



Model # 1793

Model # 1803

Aluminum Coffee Pots

- Round Shape Without Edge
- Thickness 1.5mm
- Available in Satin Finish and Non-Stick

Aluminum Coffee Pots

- Straight Edge
- Thickness 1.5mm
- Available in Satin Finish and Non-Stick

Alumn.	Non Stick	Dia. (cm)	Depth (cm)	Weight (kg)
1793-3	1798-3	6.50	6.30	0.085
1794-4	1799-4	7.40	7.30	0.095
1795-5	1800-5	8.00	8.00	0.125
1796-6	1801-6	10.00	8.50	0.135
1797-7	1802-7	10.00	9.70	0.150

Alumn.	Non Stick	Dia. (cm)	Depth (cm)	Weight (kg)
1803-3	1808-3	6.50	6.30	0.085
1804-4	1809-4	7.40	7.30	0.095
1805-5	1810-5	8.00	8.00	0.125
1806-6	1811-6	10.00	8.50	0.135
1807-7	1812-7	10.00	9.70	0.150



Aluminum House-Hold Cookware



Model # 1813

Woks

Aluminum / Non-Stick

- Metal Wire Handles Attached With Rivetes
- Thickness 2.5mm
- Available in Satin Finish and Non-Stick color coated outside

Alumn.	Non Stick	Dia. (cm)	Depth (cm)	Weight (kg)
1813-18	1818-18	18	6.5	0.600
1814-23	1819-23	23	7.5	1.000
1815-28	1820-28	28	13	1.300
1816-33	1821-33	33	13	1.600
1817-36	1822-36	36	13	2.200



Model # 1823 Non-Stick Tawa

- Bakelite Handle Attached With Rivetes
- Thickness 2.5mm

Art No.	Dia. (cm)	Weight (kg)
1823-27	27	0.500
1824-30	30	0.575



Model # 1825 Double Action Non-Stick Tawa (pizza pan)

- Bakelite Handle Attached With Rivetes
- Thickness 2.5mm

Art No.	Dia. (cm)	Depth (cm)	Weight (kg)
1825-21	21	2.5	0.350
1826-26	26	2.5	0.500
1827-28	28	2.5	0.625



Complete Kitchen Non-Stick Set



Model # 1828 15 Pcs. Non-Stick Cookware Set

- Thickness 2.5mm
- Set Includes:
 - 3 Pots With Lids
 - 1 Sauce Pan With Lid
 - 1 Fry Pan With Lid
 - 1 Wok With Lid
 - 1 Tawa
 - 2 Wooden Spoons
- Weight 8.5kg

Article	Dia. (cm)	Depth (cm)
Cooking Pan 1	21	10.5
Cooking Pan 2	23	12.5
Cooking Pan 3	26	14
Sauce Pan	18	9.5
Wok	30	9
Fry Pan	24	5.5

Non-Stick Cookware Set



Model # 1829 9 Pcs. Non-Stick Cookware Set

- Thickness 2.5mm
- Set Includes:
 - 3 Pots With Lids
 - 1 Fry Pan
 - 2 Wooden Spoons
- Weight 5kg

Article	Dia. (cm)	Depth (cm)
Cooking Pan 1	26	13
Cooking Pan 2	28	14
Cooking Pan 3	30	15
Fry Pan	28	5



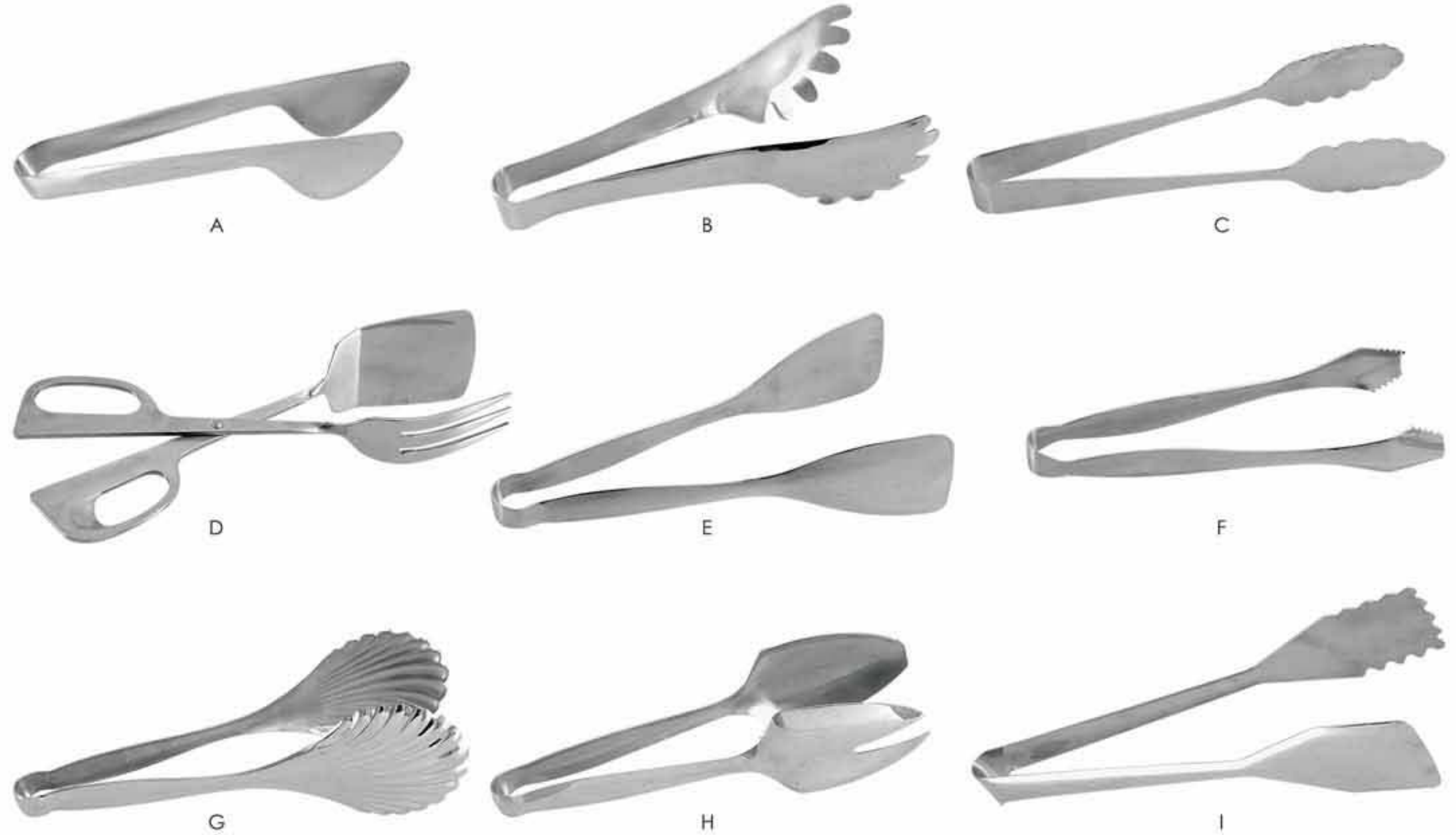
Exclusive Range



Model # 1830 House Hold Colanders

- Thickness 2.5mm
- Satin Finish

Art. No.	Dia. (cm)	Depth (cm)	Weight (kg)
1830-16	16	8.0	0.400
1831-20	20	10.0	0.500



Buffet Tongs

- Available in 9 Types
- Thickness 1.5mm
- Available in Pack of 12 pcs.

Art. No.	length (cm)	Description
1832 - A	20	Pastry Tong
1833 - B	20	Serving Tong
1834 - C	26.5	Scalloped Serving Tong
1835 - D	25.5	Scissors Tong
1836 - E	23.5	Bread Serving Tong
1837 - F	18	Ice Tong
1838 - G	25.5	Scalloped Bread Serving Tong
1839 - H	23	Salad Tong
1840 - I	30	Serving Tong



PHOENIX METAL WARE IND.

Toor Abad, Daska Road, Sialkot - Pakistan

Tel: +92 - 52 - 3258880-7

Fax: +92 - 52 - 3553320 - 3252635

E-mail: sbaig@brain.net.pk

Web: www.popular.com.pk